

Valve PSU

Written by Hans Summers

Tuesday, 05 May 2009 04:58 - Last Updated Sunday, 17 April 2011 03:28

This is an all-valve, high voltage power supply for supplying a valve amplifier. It is a simple circuit.

Specifications

Input:

230V a.c. standard European mains

Outputs: 350V @ 250mA (total current including regulated supply)
 150V @ 30mA regulated
 6.3V @ 10A

Transformer

The transformer must have a 250V secondary and a 5V @ 3A secondary winding for the heater.

{gallery}glowbugpsu/xfmr{/gallery}

Circuit Diagram

The rectifier is a full wave type using two diodes (in the GZ33 valve envelope). The two 250V a.c. secondaries are connected in series, the centre point forming the ground connection. Due to the low secondary winding resistance of toroids, surge current at switch on can be high and reduce the life of the rectifier. Because of this, resistors are used in series with each anode.

The smoothing circuit after the rectifier consists of a pi-network of a 16uF bipolar capacitor (non-electrolytic), 5H choke, and 400uF capacitor. These components were supplied by [Jan Wuesten](#), who advised the use of a non-electrolytic capacitor at the input of the smoothing network for robustness. The 44K resistor across the output is very important from a safety point of view. With it in place, the high voltage across the capacitors discharges safely within about 10 seconds of switching off the supply, and it therefore becomes safe to work on the circuit.

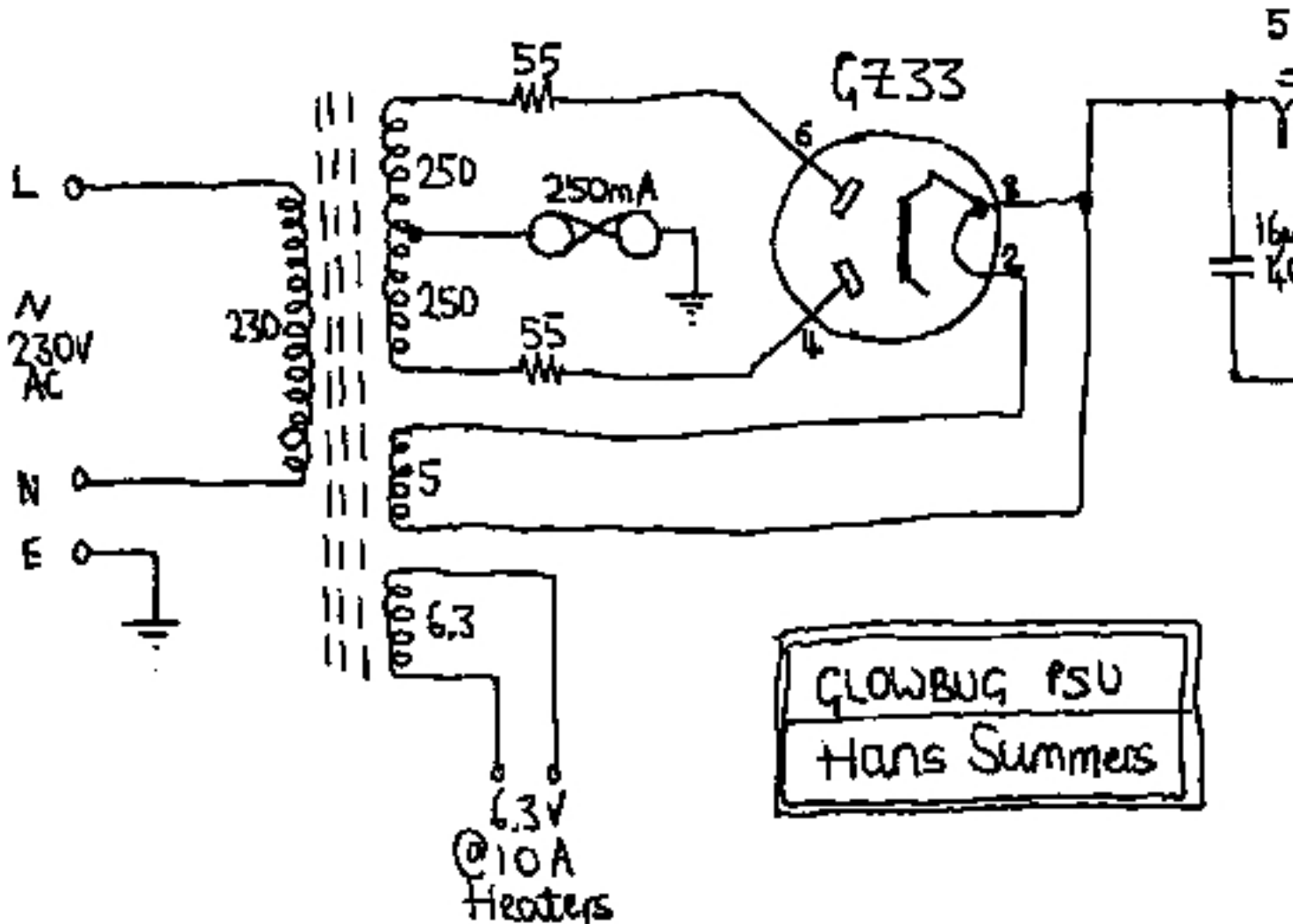
The voltage regulator uses a type VR150/30 cold-cathode gas stabiliser valve, which belonged to my [Father](#). Thoughtfully the designers of the VR150/30 connected pins 3 and 7 internally, enabling the HT supply to the regulator to be passed through the valve before meeting the series resistor. This would prevent the whole HT voltage appearing at the regulator output in the event the regulator valve was removed, thus protecting downstream circuits. The series resistor

Valve PSU

Written by Hans Summers

Tuesday, 05 May 2009 04:58 - Last Updated Sunday, 17 April 2011 03:28

of 5.5K is chosen to ensure the maximum current in the regulator valve under no load conditions does not exceed the rated maximum. In operation the valve glows a very satisfactory purple colour.



Note: Adequately rated components must be used, i.e. sufficient voltage rating for capacitors and wattage ratings for resistors.

1. The 44K bleeder resistor is made up of 2x 22K 2W resistors in series.
2. The 55 ohm anode series resistors are made up of 4x 220 ohm resistors in parallel.
3. The 5K5 voltage regulator resistor is made up of 4x 22K resistors in parallel.
4. The 400uF smoothing capacitor is made up of 4x 100uF capacitors in parallel.

Construction

Construction uses a chassis frame built from L-shaped aluminium corner pieces. The toroidal transformer, 16uF capacitor and 5H choke are bolted directly to the chassis. The other half of the chassis uses a base made from single-sided PCB material bolted to the frame, and holds

Valve PSU

Written by Hans Summers

Tuesday, 05 May 2009 04:58 - Last Updated Sunday, 17 April 2011 03:28

the 2 valves and all other components.

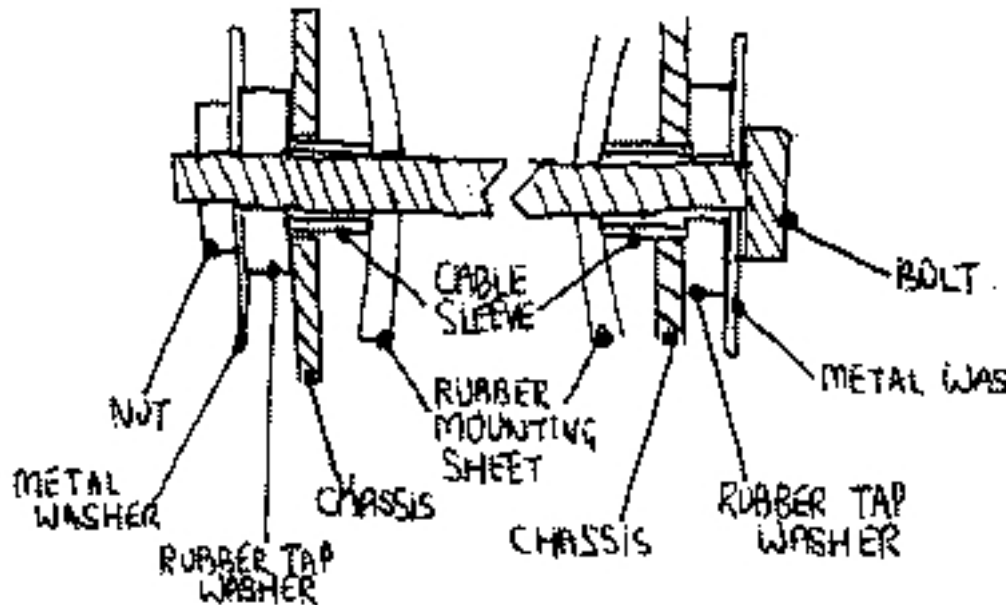
WARNING: TOROID MOUNTING!

The toroid is supplied with 2 rubber disks, one metal disk and a nut and bolt, intended for bolting the toroid

Unfortunately, the bolt and the chassis produce a complete circuit, effectively a single loop through the toroid

[{gallery}glowbugpsu/toroid{/gallery}](#)

Fortunately, I know from bitter experience to be particularly observant when first applying power to a circuit under development. I



listen carefully for crackles and pops, look for smoke, and sniff for nasty smells. A few seconds after applying power I could detect the smell of burning rubber, and switched off before too much damage was done. Only one or two layers of the plastic tape wrapping the toroid had melted where in contact with the mounting bolt. I realised the cause of the heat almost immediately.

To avoid this problem I procured a slightly longer bolt, two rubber tap washers and a large metal washer. I enlarged the holes in the aluminium chassis and inserted small sections of tubing made from the outer insulation of a section of coaxial cable, and held in place by pressure applied by the rubber mounting sheets. Effectively the bolt becomes insulated, in fact

Valve PSU

Written by Hans Summers

Tuesday, 05 May 2009 04:58 - Last Updated Sunday, 17 April 2011 03:28

insulated at both ends as a double protection.

So toroid mounters, beware! Anything passing through the centre of the toroid can effectively become a secondary winding.

Datasheets & Links

[Airlink Transformers](#) Supplier of fine custom handwound toroids

[ASK JAN FIRST Hard to get electronics](#) Supplier of chokes, valve related components, and many u

[Bill G4KKI's Homepage](#) Donor of the beautiful GZ33 rectifier

[GZ33 Datasheet](#) Data on the GZ33 Rectifier valve

[VR150/30 Datasheet](#) Data on the VR150/30 cold cathode regulator valve

More Photographs

{gallery}glowbugpsu/photos{/gallery}

Left: **Back view:** [HF station](#) in the background

Middle: **Under the chassis:** capacitors and valve sockets belonged to my [Father](#)

Right: **PSU at night:** VR150/30 centre, GZ33 right