

## CW Transmitter: 2-way ECL82 QSO recording

Written by Hans Summers

Saturday, 25 April 2009 07:21 - Last Updated Saturday, 25 April 2009 07:52

---

Here's a recording of a QSO between my ECL82 transmitter TX (QTH just south of London) and a similar transmitter built by Bill G4KKI (QTH nr Manchester). His project was started when I sent him my spare ECL82 valve after several CW QSO's on 80m. The two ECL82's which are communicating here are therefore brothers! He built two versions of the transmitter, the 2nd version uses an EZ81 rectifier valve in the power supply in place of the solid state rectifier diodes. Thanks to Bill also for giving me a nice GZ33 rectifier for my [all-valve tranceiver PSU](#) .



The recording also shows what signals sound like in my [HF receiver](#) . During the QSO I was using the normal bandpass CW filter at all times, but on occasion in the QSB I additionally switched in the phasing filter. This makes the received bandwidth considerably narrower which increases the signal to noise ratio, very useful sometimes for receiving weaker signals. But it is difficult to tune and subject to ringing, therefore I tend to use it sparingly. It also creates a slightly muffled sound which makes signals sound less sharp or crisp. This effect can make it harder to copy some stations, particularly when QRQ.

[Visit Bill's transmitter page!](#)

During another QSO Bill recorded my signals. The recordings can all be [downloaded in MP3 format by clicking here](#)

to visit the web page of Mike Andrews W5EGO. Mike kindly offered to host the files since I have limited space on this server and in any case it does not allow me to host MP3 files. Thanks

Mike! Be sure to take a look around the rest of

[Mike's interesting website](#)

**A QSL card prepared for this special occasion**

# CW Transmitter: 2-way ECL82 QSO recording

Written by Hans Summers

Saturday, 25 April 2009 07:21 - Last Updated Saturday, 25 April 2009 07:52

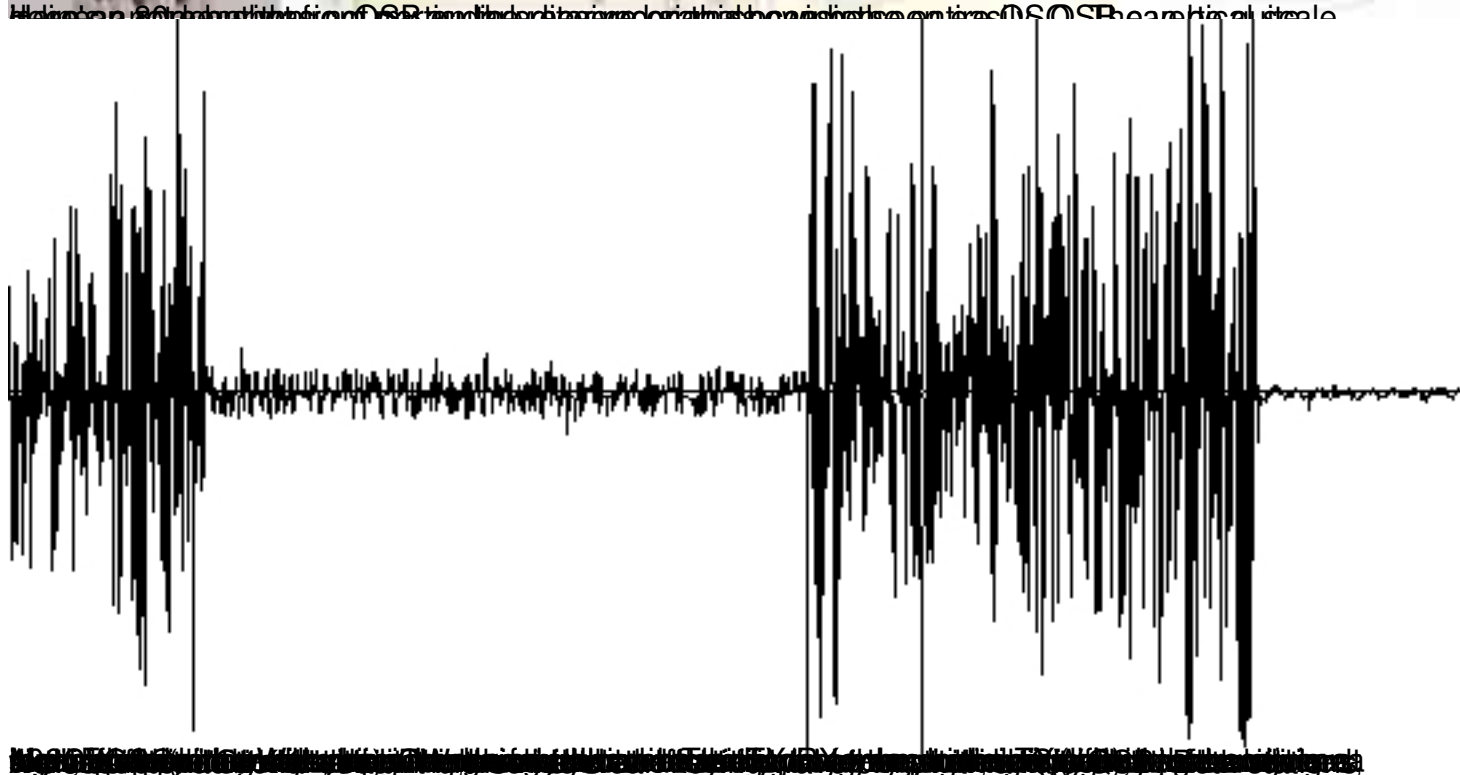


**Hans Summers**  
Whitehaven  
Hill Lane  
Kingswood  
Surrey KT20 6DZ

# GOUPL

**Confirming a memorable 2-way ECL82 QSO on**

<b>Station:</b>	TX: Homebrew 1-valve ECL82, xtal-controlled
<b>Time:</b>	RX: Homebrew Direct Conv., polyphase SSB
<b>Freq/Mode:</b>	ATU: Homebrew to longwire antenna
<b>Power:</b>	
<b>Report:</b>	





## CW Transmitter: 2-way ECL82 QSO recording

Written by Hans Summers

Saturday, 25 April 2009 07:21 - Last Updated Saturday, 25 April 2009 07:52

---



Click the image of Bill G4KKI's TX to see his website!